



# HOW TO TINT YOUR PAINT WITH NATURAL DRY PIGMENTS

\*\*\* This procedure applies to all Tockay paints and plasters, except for GekkkoSOL smooth and GekkkoSOL textured, for which GekkkoSOL thinner must be used.\*\*\*



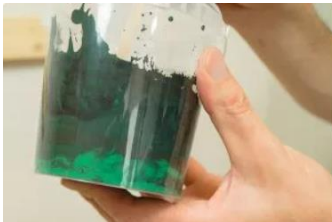
**1.** Weigh out the required quantity of pigments.



**2.** Add a little demineralized water - approximately half of the pigment weight (for example, 500 ml of water for 1 kg pigments).



**3.** Mix with a hand blender or wooden stirrer until smooth and thick.



**4.** Using a wooden stirrer or similar device, stir the pigments at the bottom of the container until they form a consistent paste.



**5.** Add the pigment mixture to the paint or plaster.



**6.** Using the stirrer, mix the pigment mixture evenly into the paint or plaster.



**7.** Apply paint (or plaster) and allow to dry.



**8.** Paints or plasters are considerably darker when not dry, and lighten as they dry.

Here's an example of an identical paint, freshly applied on the left and completely dry on the right.

